

# WALSLEY

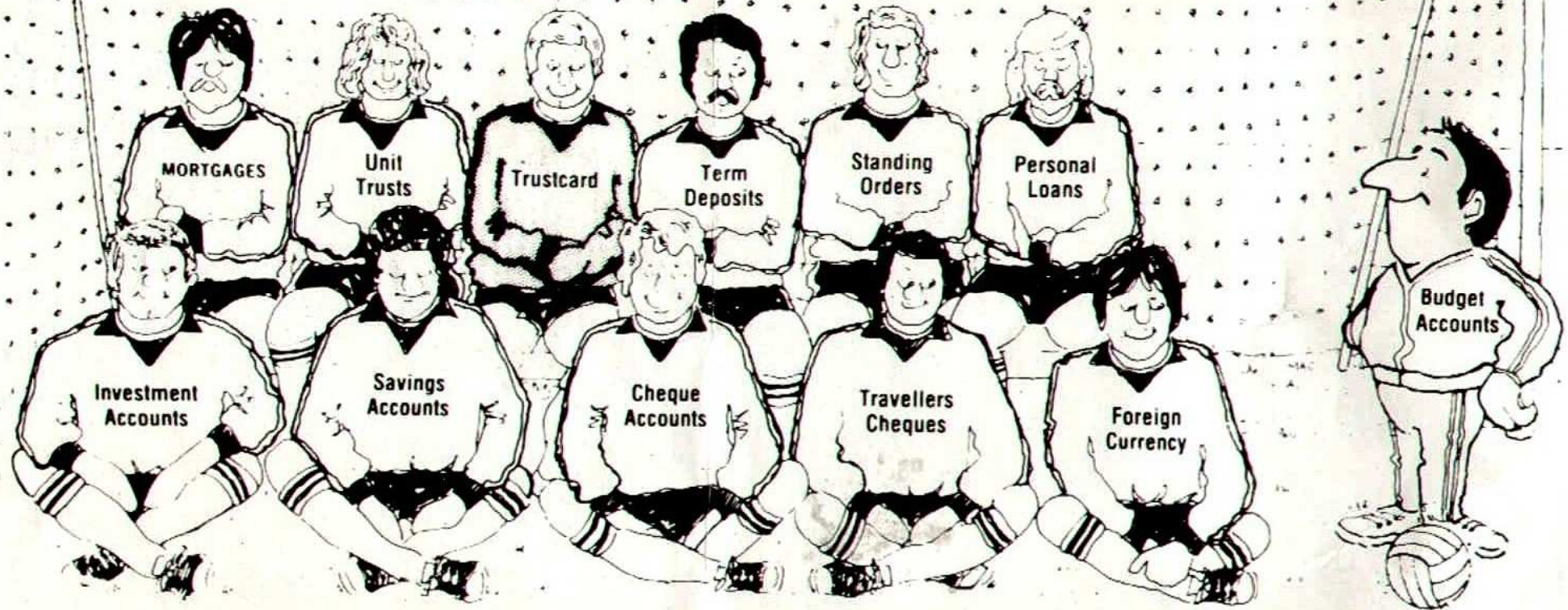
OFFICIAL MATCHDAY MAGAZINE 30p

**PAGE 3** **GIRLS**  
of the  
SOUTH STAFFS  
POOLS  
.....just LOVE MINI'S!

FOOTBALL LEAGUE  
DIVISION 3  
**SWINDON  
TOWN**  
TUESDAY  
October 20th 1981.  
Kick Off 7.30 p.m.



# **TSB** *allstar line-up*



**TRUSTEE SAVINGS BANK**

**we like to say** ***YES***

*Branches throughout Birmingham and the Midlands*



# News & Views



Here it is folks ..... **THE 'NEW' 'MINI' - CITY car.....just for you !**



This beautiful apple green Mini-City Car is the **TOP PRIZE** on our **NEW South Staffs Pools** competition. As well as the CAR there is **OVER £10,000 in CASH PRIZES ... great value at only 30p!**

**IF YOU WOULD LIKE TO WIN THIS CAR ... tickets are on Sale this Evening from our usual ticket sellers. ASK IN YOUR LOCAL SHOP or PUB TO BUY ONE TOO .. if they haven't any on sale ... Let Us Know !**

**CALLING ALL AGENTS ... COLLECT YOUR NEW TICKETS ... NOW!**

**WALSALL FOOTBALL CLUB LIMITED**

Telephone: Walsall (0922) 22791

*Directors:*

**K. E. WHELDON (Chairman)**

**J. A. HARRIS**

**R. HOMDEN**

**S. E. BOLER**

**B. E. BRADNACK**

*Secretary:*

**JOHN WESTMANCOAT**

**F. A. A. I.**

*Joint Managers:*

**ALAN BUCKLEY and NEIL MARTIN**

*Commercial Manager:*

**DAVE COX**

*Coach:*

**COLIN HARRISON**

*Physiotherapist:*

**F. PEDLEY**

*Medical Officer:*

**Dr. A. C. COTTRILL**

*Groundsman:*

**ROGER JOHNSON**

This programme is published on behalf of the  
Walsall Football Club Limited,

by

**PEMANDOS ADVERTISING & MARKETING,**

Shenstone, Lichfield, Staffordshire.

Telephone: - Shenstone 480940

Printed by W. J. Ray & Co. Limited, Walsall.

*Publisher*

**Don Stanton**

*Advertising*

**Shenstone 480940**

*Regular Editorial Contributions by:*

**Geoffrey Allman, John Clegg, Trevor Gedge,**

**Tony Leighton, Paul Marston,**

**Roy Whalley, John Westmancoat**



Tonight's match against Swindon Town is one of those occasions that prove the old adage 'football's a funny game'.

As it is recalled in the *Welcome to our visitors*, the last time Swindon came here was for our last home match of last season, when both clubs were struggling near the foot of Division Three, and in the end we both ended with the same points tally, only just above the relegation bracket.

Tonight could not be any more of a contrast. Swindon are top of the table, we are fourth - yet neither side has undergone any major changes.

So spectators should see a very different game tonight, with both sets of players full of confidence. It all points to a hard game for us, but it should also mean great entertainment for supporters.

I don't think that fans anywhere in the country can have had better value for money than has been served up at Fellows Park in the last couple of matches. We got our biggest attendance of the season against Portsmouth last Saturday, and hopefully we shall get even more supporters here tonight after the result of that match.

We really had to work hard for our 3-1 victory, just as we shall have to

# Team Talk

## Alan Buckley

work hard tonight. Teams like Portsmouth and Swindon don't come to Fellows Park to give anything away, and it's up to us to go out there and take the three points that are up for grabs.

On Saturday we did that and scored our biggest victory of the season - we might even have got more goals than the three we scored - but we went off the boil during a couple of periods and that might have let Portsmouth back into the match.

We brought danger on ourselves, especially when we coasted after the first goal - away teams are always going to come out and attack you when you are only one goal up, and when you do get that initial breakthrough it's important to

press on for a second goal.

What we need is a tighter and more consistent approach throughout matches rather than relying on our 'purple patches' to see us through.

But it was a good overall display against Portsmouth, and I was particularly pleased to see Kenny Beech get his first goal for the club with a fine header. Dave Serrella also popped up to get his first goal of the season.

John Loveridge did very well on his home debut, making the passes for a couple of the goals. He is a very good passer of the ball and - as a skilful, footballing type of player - he will click very quickly into the pattern of the team's play.

Unfortunately Kenny Mower was unavailable through a hamstringing injury on Saturday, while two other first team squad players are also out injured - Steve Round with a fractured bone in his foot and David Preece with bones in the back of his hand cracked.

We were almost down to a bare minimum of fully fit, experienced first team players on Saturday, in fact, and this is another pointer to our need to strengthen the squad. I feel that we need one more quality player to round off the first team squad and also to give us the extra 'cushion' we need in case of injuries.



# LEAMORE STAFFS

Saturday's win over Portsmouth was our fourth in a row at Fellow Park - our best run here since the beginning of the 1979/80 season, when after drawing against Chester in the League Cup, we won our first four League games here against Stockport, Hereford, Hartlepool and Lincoln.

Saturday's gate of 4,408 was our highest here since 6,026 saw us draw with Barnsley last April.

Wimbledon by contrast attracted only 1,689 for the visit of Chester on Saturday, the lowest Third Division gate of this season, but these few fans did at least have the consolation of seeing their team end a run of four successive home defeats by winning 1-0 with Paul Lazarus getting his first league goal.

Tonight's visitors Swindon maintained their unbeaten away record on Saturday - something they share with Second Division Oldham and Luton - with a spectacular 4-1 win at Bristol Rovers. This was their first visit to Eastville since 1968/9 and brought them their third win in five games there.

The other main promotion contenders, Chesterfield, had a shock on Saturday, however, going down to their first home defeat since January as Southend beat them 2-1 at Saltergate. This was United's

first away win since their opening day success here and young Danny Greaves, son of Jimmy, followed up his feat of scoring on his first appearance as substitute, by scoring in his first full league game.

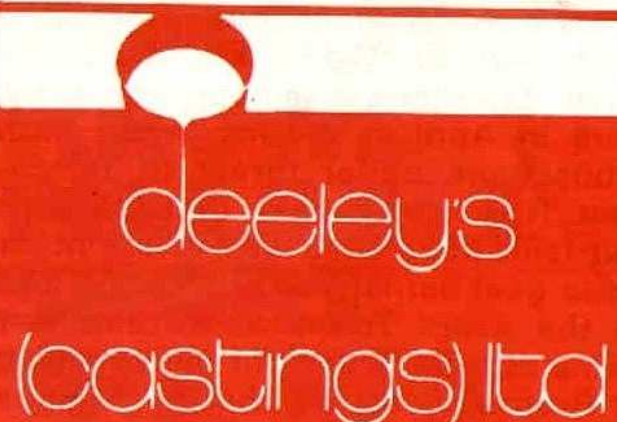
Doncaster are also still well in the running in their first season back in Division Three, Saturday's win over Millwall being their fifth 1-0 success of the season.

Another team making a habit of low scores are Preston North End, whose goalless draw with Reading on Saturday leaves them with the record of playing nine games in a row in which neither side has scored more than once.

Carlisle's Gordon Staniforth got the first hat-trick of his career in his side's 3-1 win over luckless Plymouth on Saturday and, talking of strikers, our former player Roy McDonough got his sixth goal of the season on Saturday in his side's 4-0 win over York, that keeps them optimistic about bouncing straight back up again from Division Four.

Sheffield United have similar hopes and have not lost at home so far while turning now to a Fourth Division team of just four years ago Swansea City, they have moved to the top of Division One by a hundred per cent home record and two away wins, all spearheaded by striker Bob Latchford, whose matchwinner on Saturday was his seventh goal of the season.

Ian Wallace also got a matchwinner for Nottingham Forest against his former club, Coventry City. Ian now has nine goals this season while a striker just embarking on his career, Arsenal's Raphael Meade, got the goal that enabled the 'Gunners' to chalk up their third 1-0 win in the space of four games at Highbury.



Manufacturers of GREY IRON AND  
MALLEABLE  
IRON CASTINGS

**LEAMORE LANE · LEAMORE  
WALSALL WS2 7BY STAFFS.**

*We can produce for  
you high volume  
requirements or one  
off specials.*

**LET US GIVE  
YOU A  
QUOTATION  
FOR ALL  
YOUR IRON  
CASTINGS  
FROM A FEW  
OUNCES TO  
200 lbs.**

Telephone:  
BLOXWICH  
76898/9  
or 76102

**Get Your Glass From**

DOUBLE GLAZING

LEADED LIGHTS

**WALSALL**



**Stafford St, Walsall.  
Tel: 27875 & 20588**



What a welcome change of fortune both Swindon Town and ourselves have experienced since they were here in April at a time when both clubs were under threat of relegation. It is now history that we kept our faint hope alive with a late Mark Rees goal earning us the points and in the event Town drew their last game against Brentford and we won at Bramall Lane, so that both clubs stayed up by a hairsbreadth.

The Fourth Division would have been a new experience for the 'Robins' who have a few remarkable feats to their credit over the years. While still members of the Southern League, they twice reached the semi-finals of the F.A. Cup before the first world war, and were then members of Division Three (South) throughout its existence from 1921 to 1958.

Since then they have had two spells in Division Two the second of these lasting five seasons after they had gone up on the crest of a wave with a remarkable League Cup Final win over Arsenal at Wembley for good measure. In fact in 1969/70 they were within striking distance of Division One, when finishing fifth in Division Two and winning the Anglo-Italian Cup as well.

They slipped back to Division Three in 1974, and have had rather a fluct-

uating time since. They just missed promotion in 1974/5 then narrowly escaped relegation a year later. In both 1978/9 and 1979/80, they mounted promotion bids only to fall away in the latter part of the season, then last season they failed to achieve any sort of consistency though at their best they won 4-3 at Exeter and 2-0 at Huddersfield, then beat promotion winners Barnsley and Charlton at the County Ground.

### THIS SEASON

So far they have achieved some excellent away results with wins at Chelsea and Exeter and draws at Chester and Southend, conceding only one goal in the process whilst at home they have beaten Wimbledon, Preston and Carlisle and have lost to fellow promotion pacesetters Reading and Chesterfield. Their cup-fighting tradition (remember how close they came to putting out Wolves in the League Cup semi-final two seasons ago) was not furthered, however, as they went out 5-2 on aggregate to Second Division Wrexham.

Leading scorer so far is established midfielder ROY CARTER, signed from Hereford five years ago, while promising young PAUL RIDEOUT, who made his debut last November, was on the mark against Carlisle on Saturday. ANDY ROWLAND (ex-Bury) has been the leading scorer in

# Welcome

---

---

---

each of the last two seasons and ROY GREENWOOD (ex-Hull, Sunderland and Derby) is also a useful goal-snatcher from a deeper position.

He scored against us at Swindon last season, but two others who netted against us, Ian Miller and Alan Mayes have now moved to Portsmouth and Chelsea respectively. BRIAN WILLIAMS (ex-Bury and Q.P.R.) is now well established in midfield, while former Birmingham man GARY EMMANUEL has moved this season from Bristol Rovers, and BRIAN HUGHES has graduated from the apprentice ranks.

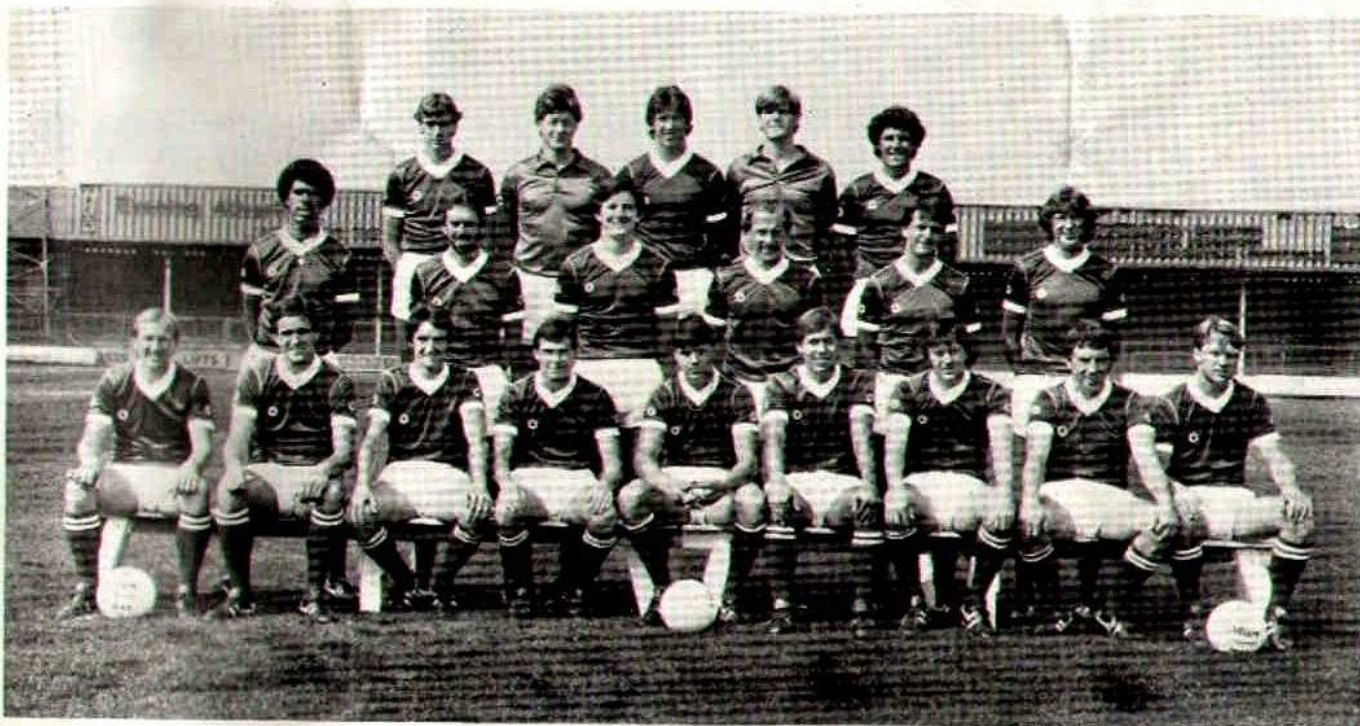
In defence manager JOHN TROL LOPE, himself a stouthearted defender in 770 league games, has achieved solidity, with the experienced DAVID PEACH (ex-Gillingham and Southampton), alongside home-grown RUSSELL LEWIS and CHARLES HENRY. Behind them Scotsman JIMMY ALLEN has played over 300 league and cup games and was an ever-present last season.



# SWINDON TOWN



**NOBODY  
KNOWS  
WALSALL  
SPORT  
THE WAY  
WE DO!**



*Back Row:* Brian Hughes, Jimmy Allan,  
David Round, Mark Stevens, Kevin Baddeley  
*Middle Row:* Chris Kamara (Now with  
Portsmouth), Roy Greenwood, Charlie Henry,  
Gary Emmanuel, Mike Graham, Roy Carter.

*Front Row:* Dave Peach (Captain),  
Andy Rowland, Steve Abbley, Craig Moores  
Paul Rideout, Kenny Stroud,  
Howard Pritchard, Russell Lewis,  
Martin Blackler.

For all local news and sport  
get Walsall's **REAL** local  
newspaper every week.

**Walsall  
Observer**



### CLIFF HOWLES - REPLIES

Please allow me to comment on your remarks made in the Wimbledon programme.

Firstly the programme has risen in price (5p) since the start of last season. Sorry Mr Stanton you are wrong.

Next the reason I found it necessary to write to the 'Argus', I have written several letters to the club in the past few seasons but have never received replies.

Finally you did not mention the errors made by one of 'Footballs Finest Statistician' (your comments in Wimbledon programme). Last seasons 'Saddlers AtoZ' was riddled with mistakes.

Cliffe Howles, Wednesbury.

**PUBLISHERS COMMENT.** Thanks for writing Cliff, at least your letter is being answered, not as you say they have not been so before. However the cost of the programme - the first 12 programmes of last season the price was 25p, the last 13 were priced at 30p, so it is correct to say that we have kept the cost the same as last season. Finally Cliff, is it fair to be critical of editorial in last seasons programme, when you are talking of this seasons', without saying so. Thanks again for writing.

### Michael R.Yates - STATISTICS

Those you requested, Michael, are too many to publish, but they have been prepared by Geoff Allman, and can be collected from the club offices.

### SUPPORTERS CLUB COACHES

Bookings before or after todays match at the Hillary Street entrance boutique.

HERE ARE SOME REPLIES TO LETTERS WE HAVE RECEIVED. FROM TIME TO TIME WE WILL PUBLISH MORE OF THEM - SO WHY NOT WRITE, SAYING WHAT YOU WOULD LIKE TO READ ABOUT, OR STATISTICS THAT YOU MAY REQUIRE, WE WOULD BE INTERESTED IN HEARING FROM YOU ON YOUR EXPLOITS WHILE WATCHING 'THE SADDLERS'.

## SOAP BOX

### Miss C. Adams - Wolverhampton

Could you please send me the statistics of all the Walsall players, likes dislikes, married or single, favorite T.V. programme. I have been a Walsall supporter for 8 years and so far have been at every match this season.

The club have over the last few seasons - and certainly two seasons ago, when I was involved in certain of the programmes - published these details, and felt we did not wish to repeat them again this season in the way they were presented before, but we are now looking at presenting them in a complete form in a future issue.

### PRESS BOX, THIS ISSUE.

What are your views on the day you like to see your matches at Walsall played. Send us your views and for the letter we think is the best reason, a stand ticket will be given. Letters before the 23rd October, addressed to Don Stanton c/o The Club.

### New Zealand Supporter writes to Paul Marston

It was with great pleasure that I read your recent article in 'Press Box'. What memories it brought back to me of years ago following the good old Saddlers all over Britain in good years and in bad. In the late 50's and until 1966 when I left England, there was a regular coach-load of us that went everywhere with the team. This was in the days of Colin Taylor, Stan Bennett, Alan Clark, Ken Hill and Alan Boswell to mention just a few. Many times I have recalled our never-to-be-forgotten jubilation on the night The Saddlers made it into Division 2 at Shrewsbury. I sincerely hope that the faithful supporters mentioned in your article will one day soon experience the same jubilation. I still follow the fortunes of the team as I listen each Sunday morning to a BBC report and results of the weekends games.

I was very surprised to see Colin Harrison in the latest team photograph. What a stalwart of the club he has been, as he was in the first team when I left England. My most recent interests in the team is the progress of young Mark Bates, whose parents are friends of mine.

Perhaps you will be hearing more about soccer in New Zealand soon, as our National team are well on their way to qualifying for the World Cup in Spain. They are playing the final eliminating games during the next few weeks and we are hopeful of great success for them.

Every good wish to my old club and to the faithful supporters it still has.

Carol Imbens (nee Burgess)

Wellington, New Zealand.

### CARLISLE UNITED SATURDAY NEXT 24th October

FARE £5.00

Leaves Delves 9.45 am.

Fellows Park 9.55 a.m. Walsall 10 am  
Bloxwich 10.15 am

### PORTSMOUTH ACTION

1. Ken Beech hits the first goal.
  2. Don Penn heads the ball down to -
  3. -Dave Serella, who gets down to score the 2nd goal.
  4. Alan Buckley hits the third goal.
- Front cover, is John Loveridge, making the pass for Alan Buckley's goal.



# Portsmouth

# ACTION





Travelling to, reporting on and coming back home from Millwall v Walsall Sunday match last week confirmed my feelings on the Sunday Soccer experiment - you can keep it!

I cannot drum up any great enthusiasm for a match that, as part of the weekend Football League programme, is taken out of its natural Saturday slot and played in isolation on the following day.

My feelings are the same about Friday night matches, which are similarly meant to be part of the Saturday schedule.

The main argument for playing these games on either Friday night, or Sunday afternoons is that clubs draw bigger crowds - and therefore make more money - than they would do if the matches were played on Saturdays.

I can understand and sympathise with this argument, and must agree that it is financially sensible for a club to switch their fixtures if they can consistently achieve higher gates on traditionally no-football days.

But the atmosphere surrounding these matches is lost when they are not played as part of the overall Saturday programme.

As an avid football fan as well as a reporter on our game, I like to view

# PRESS BOX

by TONY LEIGHTON  
*Beacon Radio & Walsall Advertiser*

a match as just one part of an exciting match day pastiche.

The anticipation of the game involves thoughts and discussion on how other teams will be fairing whilst our own team is doing battle.

While the match is on, the in-ground atmosphere is heightened by the news of other games filtering through and the Half Time Scoreboard always brings about a few cheers, jeers and terrace chat around the possibilities that are thrown up by the half times.

Then, after the game, as well as talking over the match there is the 'Pink' or the 'Argus' to look forward to with a chance to see and read about how all the other teams got on, to look at the League Tables and to set your own game into the context of a full day of football.

There is even Match of the Day to

come, which rounds off what has normally been an enjoyable day whether your team won or lost.

Friday night and Sunday afternoon games are devoid of all this. It is football in a vacuum. The game itself may be exciting and you can enjoy the 90 minutes it takes to play out the match - but football is about more than 90 minutes of on-field action, especially if you are travelling to an away match, which quite often will take up the whole of your day.

So let's have all this Friday night/Sunday afternoon nonsense finished with and have all of our Saturday Football League Programme played on Saturday. Then we can devote Sundays to, well, football. Now, there's this team in the Walsall Junior Youth League who I reckon are worth watching.....

**GOLDLINER  
COACHES LIMITED**

**TOURS**

**U.K. and EUROPE**

**FOOTBALL  
EXCURSIONS**

**TEL.090-57-2525**



# 'MONEY BAGS' GWEN SCOOPS A GRAND



John Loveridge, Walsall midfielder, presents Mrs Gwen Hayward with £1,000. Gwen, from Coalpool, is the 1st £1,000 winner on the NEW SOUTH STAFFS POOLS. The lucky agent who sold the winning ticket, Mrs Broadhurst, receives £100 bonus!

## JOHN HENRY

• HARDWARE  
• D.I.Y.



35-36 Butts Road  
Walsall  
West Midlands  
WS4 2BL

Telephone:  
WALSALL 23177 (2 lines)



## JOHN HENRY Ltd BUILDING CONTRACTORS

35-36 BUTTS ROAD,  
WALSALL,  
West Midlands, WS4 2BL

Telephone;  
Walsall 23177  
(2 lines)





## In Reserve

The second team have started their Midland Intermediate League season in fine style, scoring five wins in seven matches and losing only to strong Wolves and Aston Villa sides.

The 3-2 defeat by Villa came in the fourth match of the season, since when we have won three games out of three culminating in a 7-0 thrashing of Mansfield.

The excellent run has not been without its disappointments, however, injuries to midfielder David Preece and Striker Steve Round being especially worrying with both of them members of the first team squad.

They both took knocks in the match against Shrewsbury, which we won 4-2 in what was probably our best display of the season. Shrewsbury fielded a very strong side which included five players who had turned out for the first team in Second Division matches.

Young Craig Shakespeare had a most impressive game, particularly after he had switched from left back to midfield when David Preece had to go off with an injury to his hand.

David had in fact cracked two bones in the back of his hand, while later in the match Steve Round got a kick on the foot which resulted in the fracture of a small bone.

The injury was not thought at first to be so serious, and Steve actually played in the 7-0 win over Mansfield. He struggled badly during the latter stages of the match though, and went to hospital the following morning for the X-rays which revealed the extent of the damage.

# FACTS &

The victory over Mansfield had been a personal triumph for Paul Waddington, who got three of the goals which swamped the visitors and helped push the Reserves aggregate score up to 24 goals in their last six matches. And that's not bad going by anybody's standards!

Last Saturday's match away to Derby County had to be postponed, due to Derby's injury problems, as they could not field a side.

## NEXT HOME GAMES

SATURDAY OCTOBER 24th 1981 - K.O. 11 a.m.  
MIDLAND INTERMEDIATE LEAGUE

## LEICESTER CITY

SATURDAY OCTOBER 31st 1981 - KO 3.00 pm  
FOOTBALL LEAGUE DIVISION THREE

## PLYMOUTH ARGYLE

FOOTBALL ASSOCIATION YOUTH CUP Rd 1.  
MONDAY NOVEMBER 2nd 1981 - KO 7.30 pm

## NUNEATON

## INTERMEDIATE LEAGUE

OPPONENTS	SCORE
Aug. 29 - Wolves .....	A 0-2
Sept. 5 - West Bromwich Albion	A 4-0
Sept. 12 - Stoke City .....	A 3-1
Sept. 19 - Aston Villa .....	H 2-3
Sept. 26 - Birmingham City .....	A 5-1
Oct. 3 - Shrewsbury .....	H 4-2
Oct. 8 - Mansfield Town .....	H 7-0
Oct. 17 - Derby County .....	A
Oct. 24 - Leicester City .....	H
Oct. 31 - Nottingham Forest .....	A
Nov. 7 -	
Nov. 14 - Coventry City .....	A
Nov. 21 - Notts County .....	H
Nov. 28 -	
Dec. 5 - West Bromwich Albion	H
Dec. 12 -	
Dec. 19 - Birmingham City .....	H
1982	
Jan. 9 - Aston Villa .....	A
Jan. 16 - Wolves .....	H
Jan. 23 - Notts County .....	A
Jan. 30 - Shrewsbury Town .....	A
Feb. 6 - Derby County .....	H
Feb. 13 - Mansfield Town .....	A
Feb. 20 - Nottingham Forest .....	H
Feb. 27 - Leicester City .....	A
Mar. 6 - Coventry City .....	H

League Cup Competition

Commences March 13th 1982.

HOME MATCHES are played at  
Fellows Park.....Kick Off 11.00 a.m.



# FIGURES

FOOTBALL LEAGUE DIVISION THREE					
OPPONENTS			OPPONENTS		
	SCORE	ATT.		SCORE	ATT.
Aug. 29 - Southend United.....	H 0-1	3419	1982		
Sept. 1 - Bristol City (1st L.LC).....	A 0-2	3906	Jan. 2 - Burnley (FA 3).....	H	
Sept. 5 - Brentford.....	A 0-0	5350	Jan. 9 - Brentford.....	H	
Sept. 12 - Chesterfield.....	H 1-1	3280	Jan. 13 - League Cup 5.....		
Sept. 15 - Bristol City (2nd L.LC).....	H 1-0	2830	Jan. 16 - Exeter City.....	A	
Sept. 19 - Oxford United.....	A 1-0	3685	Jan. 23 - Southend United (FA.4).....	A	
Sept. 23 - Chester.....	A 0-0	1978	Jan. 30 - Oxford United.....	H	
Sept. 26 - Wimbledon.....	H 1-0	3027	Feb. 3 - League Cup SF 1.....		
Sept. 29 - Lincoln City.....	H 2-1	3653	Feb. 6 - Chesterfield.....	A	
Oct. 3 - Bristol City.....	A 1-0	6033	Feb. 9 - Chester (LC.SF.2).....	H	
Oct. 7 - League Cup 2 (1L).....			Feb. 13 - Bristol City (FA.5).....	H	
Oct. 11 - Millwall.....	A 0-2	6289	Feb. 20 - Lincoln City.....	A	
Oct. 17 - Portsmouth.....	H 3-1	4408	Feb. 27 - Millwall.....	H	
Oct. 20 - Swindon Town.....	H		Mar. 6 - Portsmouth (FA.6).....	A	
Oct. 24 - Carlisle United.....	A		Mar. 9 - Swindon Town.....	A	
Oct. 28 - League Cup 2 (2L).....			Mar. 13 - Carlisle United (LCF).....	H	
Oct. 31 - Plymouth Argyle.....	H		Mar. 16 - Reading.....	H	
Nov. 4 - Reading.....	A		Mar. 20 - Plymouth Argyle.....	A	
Nov. 7 - Newport County.....	H		Mar. 27 - Newport County.....	A	
Nov. 11 - League Cup 3.....			April 3 - Fulham (FA.SF).....	H	
Nov. 14 - Fulham.....	A		April 10 - Huddersfield Town.....	A	
Nov. 21 - F.A. Cup 1.....			April 13 - Preston North End.....	H	
Nov. 28 - Bristol Rovers.....	H		April 17 - Gillingham.....	H	
Dec. 2 - League Cup 4.....			April 24 - Bristol Rovers.....	A	
Dec. 5 - Gillingham.....	A		May 1 - Exeter City.....	H	
Dec. 12 - F.A. Cup 2.....			May 4 - Wimbledon.....	A	
Dec. 19 - Doncaster Rovers.....	A		May 8 - Burnley.....	A	
Dec. 26 - Huddersfield Town.....	H		May 15 - Doncaster Rovers.....	H	
Dec. 28 - Preston North End.....	A		May 22 - F.A. Cup Final.....		

## FOOTBALL LEAGUE DIVISION 3.

Saturday October 17th 1981.

Home v Portsmouth.

Score: 3-1. Scorers: Beech, Serella, Buckley.

Green, Macken, Caswell, Beech, Serella,

Hart, Rees, Loveridge, Penn, Buckley,

Waddington (S), Sub. O'Kelly for Loveridge.

**MATCH BALL SPONSORS**  
**INTERESTED IN SPONSORING THE**  
**BALL, YOU RECEIVE AN AUTOGRAPHED**  
**BALL AFTER THE GAME.**  
**CONTACT THE CLUB OFFICES NOW.**

**WALSALL PRESSINGS**  
 COMPANY LIMITED

**For Pressings and Fabrications**



**WEDNESBURY ROAD**  
**WALSALL WS1 4JW**

Telephone:  
 Walsall 25252/4

**Away Support**

## CARLISLE UNITED

From Walsall follow signs Wolverhampton A454.  
 In 1.9 m at roundabout follow signs The North West to join Motorway M6.  
 Continue up the M6 Motorway following signs The North West then later Preston.  
 Later signs Lancaster with the M6 Motorway, Kendal with the M6, Penrith with the M6, then later signs Carlisle.  
 Continue with the M6 as far as Junction 43, branch left leaving the Motorway and at roundabout take first exit A69 (SP - Carlisle) into Warwick Road for Carlisle United Football Club which is on the right.



Following on from last Saturday's programme - *Personality Spot* - when we talked about David Bathurst, the D.J. from Radio Saddler, but also gave you an insight into David's world as an International Water Polo referee, we continue with a brief outline on that game which I am sure that many of you have not seen.

Acquatic Football, that was what Water Polo was once described, and in many senses it is similar to football, with the main aim being to put the ball in the back of the opponents' net. There are, of course, a few rules which govern the way in which the game is conducted. Unfortunately, these rules have been chopped and changed over the years, with the result that many of the older spectators can today hardly recognise the sport as they knew it.

Each team can have a squad of 13 players, with 7 being in the water at any time - substitutions can be made after goals, or at the

end of a period (the game is split into 4 equal periods). Playing time is 28 minutes for the more senior games, and 20 minutes for the lesser games - but every time the whistle goes the timekeeper stops the clock, resulting in games lasting between 40 minutes and an hour.

But let's look at Walsall's water polo team.....

This season, the senior team has been competing in the Second Division of the National League, and in the Midland Senior League - together with various Cup Competitions. In addition, the 'B' team has competed in the Birmingham League (Division 1), and a Junior team (Under 18) has played in the Midland Junior League.

With the National League, it brings together teams from all over the Country, and the current Second Division includes teams from, London, Leamington Spa, Manchester and Sheffield, as well as the West Midlands.

## LOOKING AT Water Polo

As all players in the sport must be of amateur status, the teams have to be self-financing, especially as there is little or no spectator support to provide essential funds. referees' expenses (and they do only get expenses), have to be met, together with bath-hire charges, and the high cost of water polo caps and match balls, all of these result in the players having to put a lot of their own money into the sport to enable them to enjoy playing.

To be successful, a player needs great strength and fitness, because the game nowadays relies on players reacting quickly to the referees' signals. Good ball control, shooting ability and accuracy in passing are all vital qualities.

In the National League and Midland League games, together with the more

important Cup competitions, the game is controlled by two referees - who do not have to be in the water with the players! Although both referees have equal authority, each has well-defined responsibilities and generally controls the play as it moves to the goal on his right. The referees walk up and down the side, following the play, on opposite side of the pool.

Fouls, there is the ordinary foul - which results in a free throw to the opponents, and the major foul, when the guilty player has to leave the water for a spell in a 'sin-bin' or a penalty throw is awarded. What if the two referees do not agree - the rules provide for such, but in top games this rarely happens.

So when you are looking for sporting excitement, why not get along to the Walsall baths when they are at home in a Water Polo match - their matches never clash with the Saddlers matches, so you will not miss the sporting excitement here.



## TONIGHT'S REFEREE

**ARTHUR ROBINSON** from *Radcliffe*  
Arthur has been a referee for 23 years starting in the local Radcliffe League, then via the Bolton Combination, Lancashire Combination to be here today, and refereed both the Semi-finals and Finals of these leagues.

Married with two sons, he is an official of a Professional Executor and Trustee Company. His interests other than football include travelling and the cinema, but also enjoys the outdoors, with walking to the fore of these pursuits.

## CLEARWAYS OF WALSALL

Luxury Coaches  
for  
BRITISH and CONTINENTAL  
TRAVEL

135 DARLASTON ROAD, PLECK,  
WALSALL. Tel. Walsall 23376.

## WALSALL F.C. SOUVENIERS

SWEATERS and REPLICA  
KITS NOW AT THE CLUB  
SHOP, OR FROM

**STEPHENS**  
SPORTS

Wolverhampton St, Walsall.  
Walsall's Largest Sports and  
Leathergoods Store.

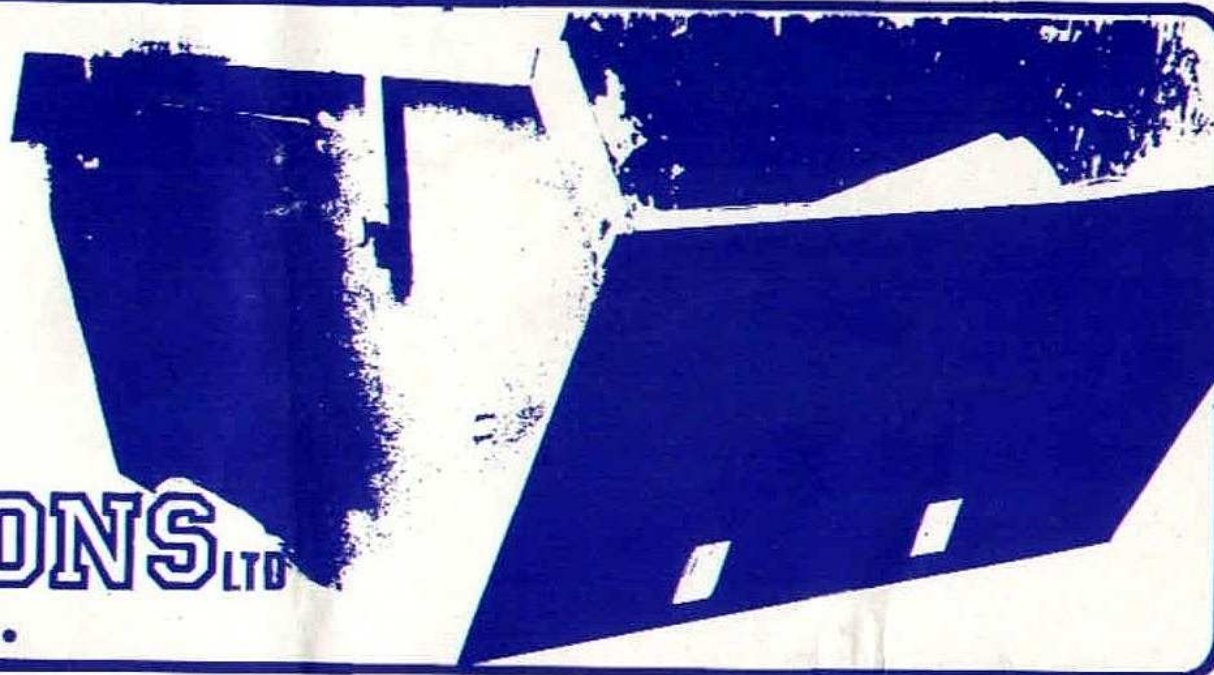
# SKIP HIRE

Tel: 79490  
& 614103

IRON AND STEEL MERCHANTS  
SKIP CONTAINER HIRE  
SCRAP & FACTORY CLEARANCE

# J. HODSON & SONS LTD

BLOXWICH ROAD, WALSALL.





# Teams

## WALSALL

RED SHIRTS, WHITE SHORTS

RON GREEN 1

TONY MACKEN 2

BRIAN CASWELL 3

KEN BEECH 4

DAVE SERELLA 5

PETER HART 6

MARK REES 7

JOHN LOVERIDGE 8

DON PENN 9

ALAN BUCKLEY 10

STEVE WADDINGTON 11

12

## SWINDON TOWN

YELLOW SHIRTS, BLUE SHORTS.

JIMMY ALLEN

CHARLIE HENRY

DAVID PEACH

BRIAN HUGHES

RUSSELL LEWIS

MIKE GRAHAM

ROY CARTER

GARRY EMMANUEL

ANDY ROWLAND

PAUL RIDEOUT

GARRY WILLIAMS

## Officials

Referee:  
Arthur Robinson.

Linesmen: A.T.Bywater - Red Flag.  
R.A.Funnell -Yellow Flag.

**MATCHBALL  
DONOR**

**John Guise LONGHORN**  
SUTTON ROAD, WALSALL.



## HEWITTS OF WALSALL

NOT ONLY THE BEST SELECTION OF  
*USED CARS* in the MIDLANDS but  
also *the best free used car guarantee*

1981V JAGUAR XJS Red	£14,499
1980W PRINCESS 1700 HL Blue	£3,399
1980V CHEVANNE Red	£1,899 + VAT
1980V TRIUMPH DOLOMITE 1300	£2,799
1980V MARINA 1700HL Blue	£2,499
1980W MAZDA MONTROSE 1600GL	
Bronze	£3,499
1980V ROYALE COUPE AUTO Bronze	
	£7,299
1980V ALLEGRO 1750 EQUIPE	£2,999
1980V ROVER 3500 Auto Green	£5,999
1980V ROVER 2600 PAS Auto	£4,999
1980V FIAT 126 DEVILLE Blue	£1,699
1979V ROVER 3500 Auto White	£3,999
1979V FORD CAPRI 200GL bronze	£3,199
1979T MAXI 1750 HLS Bronze	£2,599
1979T MARINA 1700 L Estate	£2,499
1979T M.G. MIDGET Red	£2,599
1979T CARLTON ESTATE bronze	£3,999
1979V LADA 1500 Estate Cream	£1,799
1979V ROVER 3500 5-Speed Silver	£4,999
1979T CORTINA 1600L 4Dr. Blue	£2,699
1979T RENAULT 14 TL Blue	£2,399
1979T COLT SAPPORO 2000	£3,399
1978T PRINCESS 2200 HLS	£2,499
1978T CITROEN GS CLUB white	£1,699
1978T ROVER 2300 PAS 5-Speed	£2,999



**HEWITTS**

HEWITTS GARAGES LTD.  
Wolverhampton Street,  
Walsall. Tel: 26567

